

# **FIREPRO<sup>®</sup>** **FIRESTOP** **COMPOUND**

Firestop solution for cable, pipe and duct penetrations



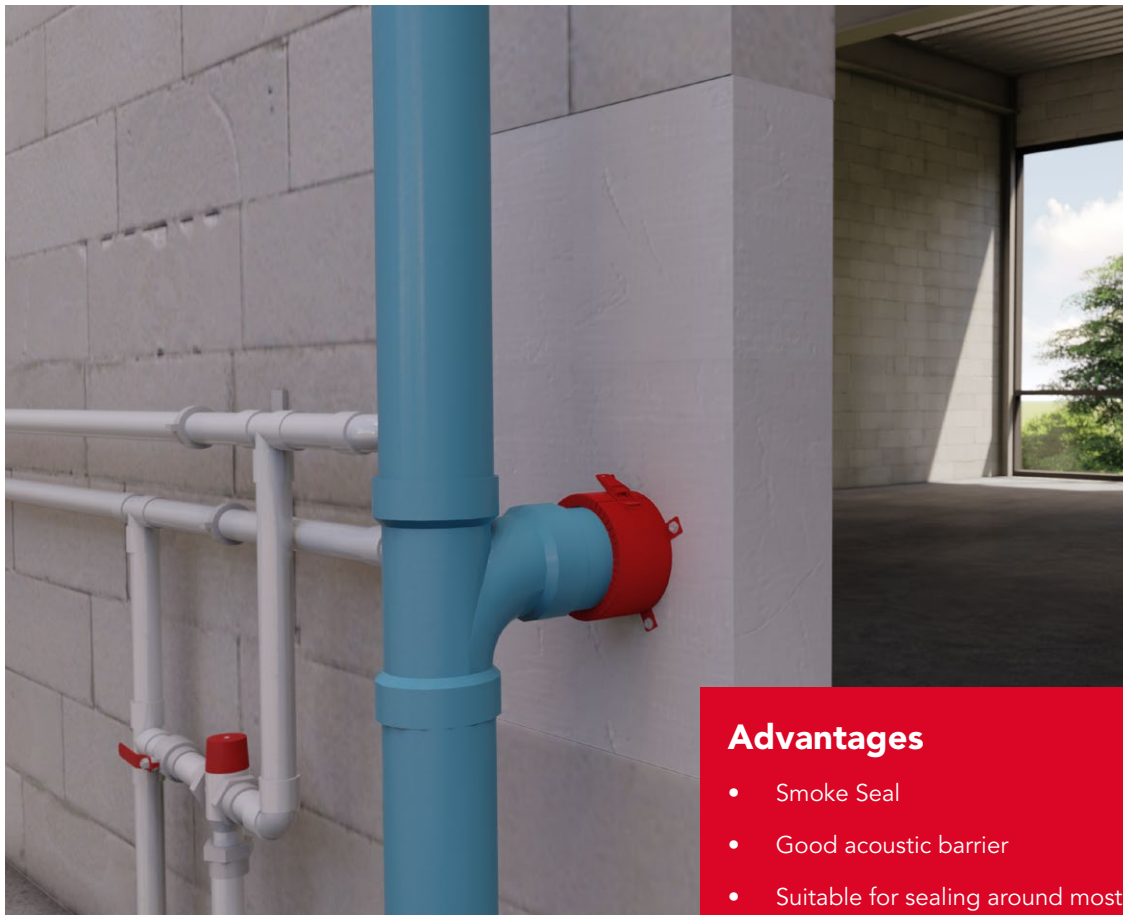
# FIREPRO® FIRESTOP COMPOUND

As part of the comprehensive FirePro® range of fire protection products, ROCKWOOL Firestop Compound is used to provide a fire resisting seal around service penetrations in fire rated walls and floors.

Tested to BS476 Part 20, 1987, Firestop Compound provides up to 6 hours fire protection.







### Advantages

- Smoke Seal
- Good acoustic barrier
- Suitable for sealing around most types of service penetrations
- Load bearing capability
- Simple installation
- No smoke emission
- Unaffected by humidity

### Description

Firestop Compound is a specially formulated gypsum based compound, which is mixed with water to be trowelled or poured around service penetrations.

### Applications

- Re-instating the fire resistance of wall and floor constructions
- Load bearing floors
- Wall penetrations
- Load bearing seals around unsupported fire dampers

## Performance

### Acoustic performance

Thickness of Compound (mm)	Weighted Sound Reduction Index (Rw)
75	39dB
100	46dB
150	51dB

For specific information on acoustic performance please contact ROCKWOOL Technical Solutions on 01656 868490 or [technical.solutions@rockwool.co.uk](mailto:technical.solutions@rockwool.co.uk).

### Load bearing capability

Thickness of Compound (mm)	Max. load bearing area free of services
75	500 x 500mm
100	750 x 750mm

Openings with a clear area larger than 750 x 750mm need to be reinforced as outlined within the installation section. For further information on the reinforcement of openings greater than 750 x 750mm, please contact ROCKWOOL Technical Solutions on 01656 868490 or [technical.solutions@rockwool.co.uk](mailto:technical.solutions@rockwool.co.uk).

## Firestop Compound - Spans with services

### Non-reinforced seals

Firestop compound thickness (mm)	Fire rating (hours)	Max. opening width x any linear length (mm)	Load bearing capacity (Kn)
75	2	500	2.5
100	4	750	2.5

### Simply reinforced seals

Firestop compound thickness (mm)	Fire rating (hours)	Max. opening width x any linear length (mm)	Load bearing capacity (Kn)
100	4	Up to 1500	2.5

## Technical information

### Standards and approvals

FirePro® Firestop Compound has been tested to BS 476 Part 20:1987

FirePro® Firestop Compound is third party accredited through IFC and Certifire.

This product has been authorised for use in LUL surface and sub-surface premises when installed in accordance with this datasheet - please refer to the LUL Approved Product Register website [www.LU-apr.co.uk](http://www.LU-apr.co.uk) for specific details.

### Fire performance

Firestop Compound has been independently tested for use in walls and floors.

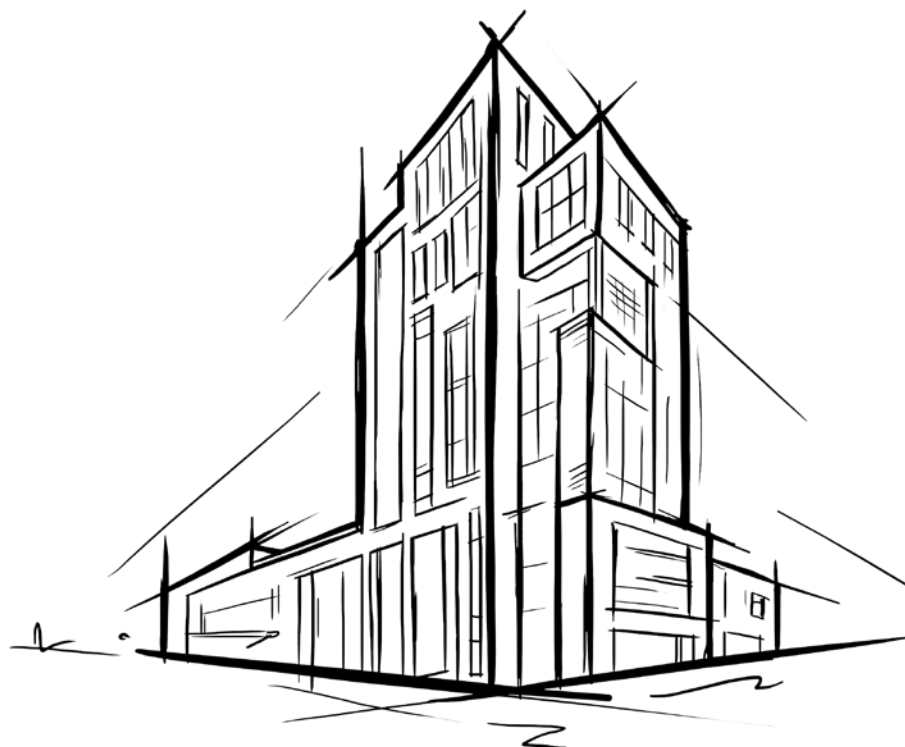
When reinforced, Firestop Compound offers up to 360mins protection for both Integrity and Insulation in masonry/ concrete walls or concrete floors.

When un-reinforced, Firestop Compound offers up to 240mins protection for both Integrity and Insulation in masonry/ concrete walls or concrete floors.

Plastic pipework must be protected with either ROCKWOOL Firestop Pipe Collars or Intumescent Pipe Wraps. For further advice on specific applications and fire performance, please contact ROCKWOOL Technical Solutions on 01656 868590 or [technical.solutions@rockwool.co.uk](mailto:technical.solutions@rockwool.co.uk).

### Product information

Property	Description
Pack Size	22Kg Bag
Fire Resistance	Up to 6 hours
Load Bearing Capacity	Up to 2.5KN
Acoustic Performance	Up to 51dB



## Installation

### Floor installations

In floors, a permanent shuttering made from 50mm ROCKWOOL slab (minimum density 140kg/m<sup>3</sup>) is cut and friction fitted between services and the edges of the floor slab. Firestop Compound is then trowelled over the shutter to a depth of 25mm thick. This is allowed to cure. Further Firestop Compound is then mixed to a pouring grade and tops the seal up to the required depth (See Figure 1).

Firestop Compound sets in 30-45 minutes and is capable of accommodating light foot traffic in approximately 72 hours.

### Installation instructions – floors

1. Mix a bag of compound to 10 litres of water (3:1) by volume. Vary to suit site conditions.
2. Set the shuttering into the opening ensuring a tight fit so that once the required depth of compound is installed it finishes flush with the floor slab/screed unless otherwise specified.
3. Mix and pour compound until the required thickness is achieved.

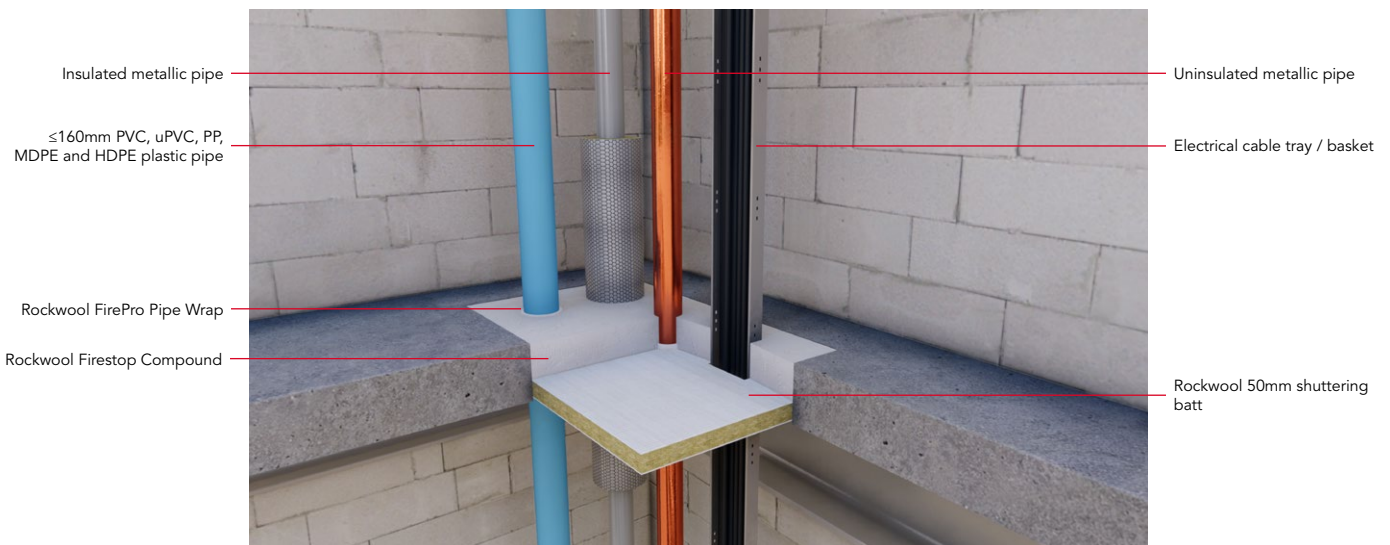


Figure 1

### Wall installations

In wall applications (See Figure 2), Firestop Compound is mixed into a stiff consistency for trowelling into openings.

### Installation instructions – walls

1. Mix a bag of compound to 10 litres of water (3:1) by volume. Vary to suit site conditions.
2. Apply the compound using the specified shuttering method (See Figure 3).
3. Trowel the compound starting at the base of the opening ensuring the correct thickness of material is installed. Work progressively towards the top of the opening until the barrier is complete. If the shuttering panel is set at the centre, repeat the process on the other side.

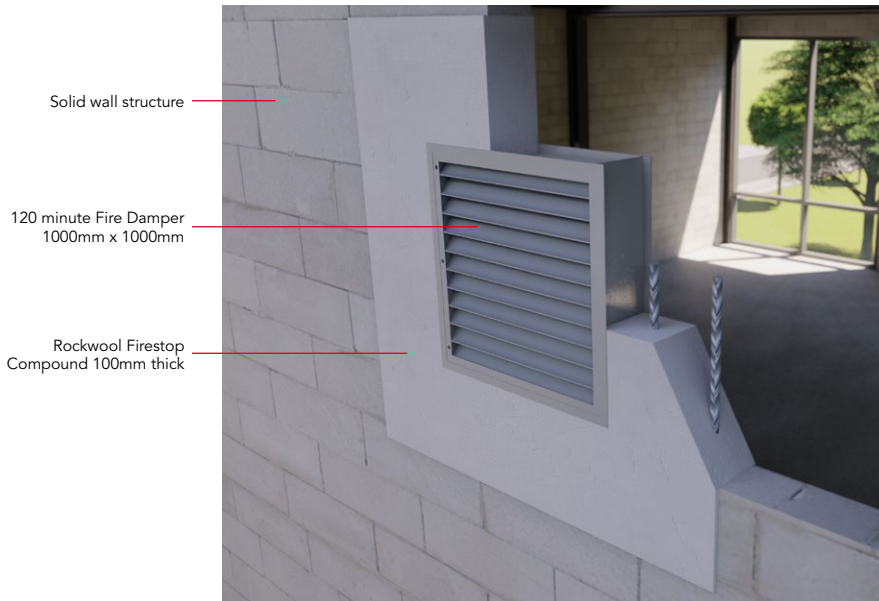


Figure 2

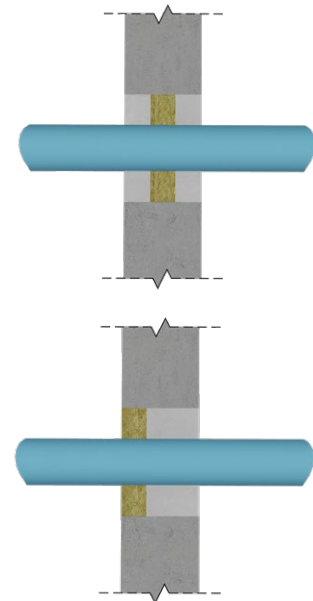


Figure 3

### Coverage

Thickness of Compound (mm)	Number of bags/m <sup>2</sup>
75	3.15
100	4.20
150	6.30

The above calculations are approximate and based on 22kg bags.

The coverage rates shown do not take into account the area of service penetrations within the aperture.

### Specification clauses

ROCKWOOL Firestop Compound is associated with the following NBS clauses:

P12 Fire stopping systems

- 340 Intumescent Mortar

### Disclaimers

This product should only be utilised for applications as outlined in the relevant ROCKWOOL product datasheet and in accordance with the relevant ROCKWOOL Fire Resistance Testing. Additionally the product must be installed in accordance with the current ROCKWOOL guidelines. For further information please visit [www.rockwool.co.uk](http://www.rockwool.co.uk) or contact our Technical Solutions Team on 01656 868490.

### Supporting information

For further information relating to any aspect of the FirePro range, please refer to the applicable ROCKWOOL standard details at [www.rockwool.co.uk](http://www.rockwool.co.uk) or contact the ROCKWOOL technical solution team on 01656 868490 or [technical.solutions@rockwool.co.uk](mailto:technical.solutions@rockwool.co.uk).

## Sustainability

As an environmentally conscious company, ROCKWOOL promotes the sustainable production and use of insulation and is committed to a continuous process of environmental improvement.

All ROCKWOOL products provide outstanding thermal protection as well as four added benefits:



**Fire resistance**



**Acoustic comfort**



**Sustainable materials**



**Durability**

## Environment

Made from a renewable and plentiful naturally occurring resource, ROCKWOOL insulation saves fuel costs and energy in use and relies on trapped air for its thermal properties.

ROCKWOOL insulation does not contain (and has never contained) gases that have ozone depletion potential (ODP) or global warming potential (GWP).

ROCKWOOL is approximately 97% recyclable. For waste ROCKWOOL material that may be generated during installation or at end of life, we are happy to discuss the individual requirements of contractors and users considering returning these materials to our factory for recycling.

## Health & Safety

The safety of ROCKWOOL stone wool is confirmed by current UK and Republic of Ireland health & safety regulations and EU directive 97/69/EC: ROCKWOOL fibres are not classified as a possible human carcinogen.

A Material Safety Data Sheet is available and can be downloaded from [www.rockwool.co.uk](http://www.rockwool.co.uk) to assist in the preparation of risk assessments, as required by the Control of Substances Hazardous to Health Regulations (COSHH).



## Interested?

For further information, contact the Technical Solutions Team on 01656 868490 or email [technical.solutions@rockwool.co.uk](mailto:technical.solutions@rockwool.co.uk)

Visit [www.rockwool.co.uk](http://www.rockwool.co.uk) to view our complete range of products and services.

*Copyright ROCKWOOL September 2018.*



### The ROCKWOOL Trademark

ROCKWOOL® - our trademark

The ROCKWOOL trademark was initially registered in Denmark as a logo mark back in 1936. In 1937, it was accompanied with a word mark registration; a registration which is now extended to more than 60 countries around the world.

The ROCKWOOL trademark is one of the largest assets in the ROCKWOOL Group, and thus well protected and defended by us throughout the world.

If you require permission to use the ROCKWOOL logo for your business, advertising or promotion. You must apply for a Trade Mark Usage Agreement. To apply, write to:  
[marketcom@rockwool.com](mailto:marketcom@rockwool.com).

### Trademarks

The following are registered trademarks of the ROCKWOOL Group:

ROCKWOOL®

ROCKCLOSE®

RAINSCREEN DUO SLAB®

HARDROCK®

ROCKFLOOR®

FLEXI®

BEAMCLAD®

FIREPRO®

### Disclaimer

ROCKWOOL Limited reserves the right to alter or amend the specification of products without notice as our policy is one of constant improvement. The information contained in this brochure is believed to be correct at the date of publication. Whilst ROCKWOOL will endeavour to keep its publications up to date, readers will appreciate that between publications there may be pertinent changes in the law, or other developments affecting the accuracy of the information contained in this brochure. The applications referred to within the brochure do not necessarily represent an exhaustive list of applications. ROCKWOOL Limited does not accept responsibility for the consequences of using ROCKWOOL in applications different from those described within this brochure. Expert advice should be sought where such different applications are contemplated, or where the extent of any listed application is in doubt.

© ROCKWOOL 2018. All rights reserved.

### Photography and Illustrations

The product illustrations are the property of ROCKWOOL Ltd and have been created for indicative purposes only.

Unless indicated below, the photography and illustrations used in this guide are the property of ROCKWOOL Limited. We reserve all rights to the usage of these images.

If you require permission to use ROCKWOOL images, you must apply for a Usage Agreement. To apply, write to:  
[marketcom@rockwool.com](mailto:marketcom@rockwool.com).

**Notes**

**Notes**

February 2019

**ROCKWOOL Limited**

Pencoed  
Bridgend  
CF35 6NY

Tel: 01656 862 621  
info@rockwool.co.uk  
rockwool.co.uk

